

Builders

- Zhonghua Shipyard
Shanghai, China

Flag

- Bahamas

Home port

- Nassau

Commercial Manager

- CEC
Clipper-Elite Carriers A/S

Class

- Det norske Veritas,
+1A1, General Cargo
Carrier, Container
Carrier, Ice Class IC, EO,
W1-0C, 1B(+)

The Fleet

The Fleet	Built
CEC Confidence	1997*
CEC Cardigan	1997*
CEC Conway	1998*
CEC Cowbridge	1998*
CEC Cardiff	1998*
CEC Carmarthen	1998*
CEC Westoe	1999*
CEC Chepstow	1999*

The Fleet

The Fleet	Built
CEC Culembourg	2000**
CEC Crusader	2000**
CEC Courage	2000***
CEC Copenhagen	2001***
CEC Castle	2001***
CEC Caledonia	2001***
CEC Century	2002***

type

CEC CONFIDENCE



cec confidence

Tonnage

- DWT: about 8874mt
(without tweendeck)
- Weight of tweendeck
pontoons 245mt
- GT/NT: 6714/2890
- Suez: 6656/ 4861

Type

- Single screw steel
multipurpose vessel
- Flush tween deck
removable
- Bow thruster
& "Becker" rudder

Dimensions

- LOA: 100,50m
- Lpp: 95,00m
- Beam: 20,40m
- Draft Summer SW: 8,20m
- Air draft less draft aft:
42,5m

Capacity

- Grain/Bale:
- 371863ft³/10530m³
without tweendeck
- 345165ft³/9774m³
with tweendeck
- 783m² in lower hold
platforms lower hold 97m²
- 946m² in tweendeck plat-
forms tweendeck 32m²
- 650 teus, without tween-
deck pontoons onboard
- Vessels built as from 1999
are lakesfitted

Heights

- Lower hold
- Tweendeck: 5,80m
- Tweendeck
- Hatch cover: 5,0m
- Lower hold
- Hatch cover: 11,75m
- CEC Westoe, Chepstow,
Culembourg, Crusader,
Castle, Caledonia and
Century: tweendeck
adjustable in two heights,
Excluding tween deck
pontons in Bay 1 + Bay 3
(only lower position).
See drawing overleaf

Hatch

- One large hatch
64,40 x 15,30m
- MacGregor non sequen-
tial pontoon hatch cover

Hold

- One box-shaped double-
skinned cargo hold
64,40 long x 15,20m wide
x 11,75m high
- Steel floored tanktop
with flush container shoes
- The hold narrows in the
fore ship stepwise in con-
tainer dimensions
- The container platforms
in the fore part of the
hold should be noted
- Fitted with a complete set
of loose tweendeck steel
pontoons

Hold Equipment

- 25 air changes per hour
(based on empty hold)
- CO² fitted in cargo hold
- Cargo hold can be divided
into four sections for
cargo separation

Cranes

- Two electro-hydraulic
cranes mounted in port
side. Combinable up to
300mt for 150mt cranes
and for 200mt cranes up
to 400mt. Subject to di-
mensions and hook points
of units to be carried
- Standard rigging of the
cranes is 36mt. For CEC
Westoe and subsequent
vessels standard rigging is
optional between 90mt/
150mt or 200mt
- Cranes fitted with 90mt
and 150mt or 200mt
heavy lift brackets and
6mt or 32mt SWL auxiliary
winch. See "Crane
Configurations"

Crane Configurations/SWLs:

- * 6mt auxilliary winch +
36mt + 90mt H/L + 150mt
H/L
- ** 32mt auxilliary winch +
36mt + 90mt H/L + 150mt
H/L
- *** 32mt auxilliary winch +
36mt + 90mt H/L + 200mt
H/L

Main Engine

- Wärtsila 8L46B
7800kW/500rpm
with gear (148rpm)

Generators

- 1 shaft generator
(1800rpm)
- 3 diesel generators of
900kW
- 1 emergency generator of
108kW

Speed & Consumption

- About 16,5knots on 28mt
IFO 380cst
- Port consumption idle:
1,6mt MDO
- Port consumption gear
working: 4,4mt MDO

Tank Capacity

- Heavy fuel oil (IFO):
881m³
- Diesel oil (MDO): 113,5m³
- Water ballast: 3035m³
- Fresh Water: 59m³

Reefer Plugs

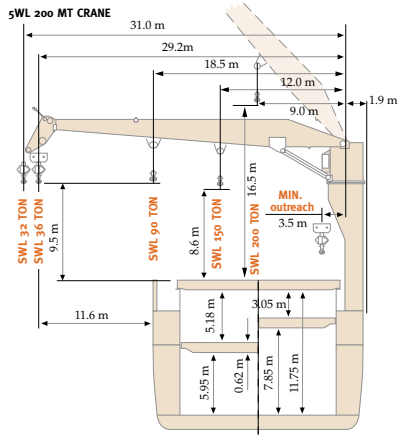
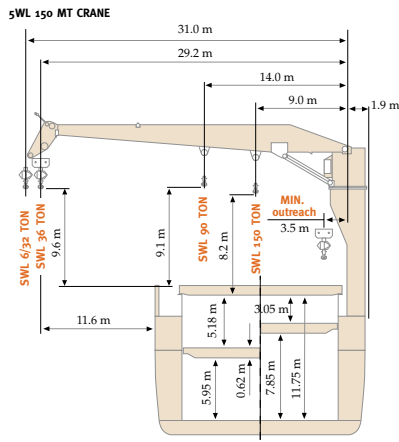
- 24 reefer plugs in hold
- 82 reefer plugs on deck

Container Equipment

- Vessel is fitted with a full
set of container lashing
equipment
- Vessel is fitted with a
20' spreader and a 40'
spreader for container
handling

Load distribution	Tank top	Tween deck	Hatch cover	Main deck
Uniform load (mt/m)	15	3	3	2.3
Stack load TEU (mt)	100	-	50	70
Stack load FEU (mt)	130	-	65	90





Crane Capacity: 150 MT version

SWL	Outreach		Clearance *	
	Minim.	Maxim.	Maxim.	Minim.
6/32mt, aux winch	5,0m	31,0m	39,6m	9,6m
36mt	3,5m	29,2m	36,4m	8,8m
90mt	4,0m	14,0m	22,0m	9,1m
150mt	3,5m	9,0m	17,0m	8,2m

* Clearance between hook and hatch cover

Crane Capacity: 200 MT version

SWL	Outreach		Clearance *	
	Minim.	Maxim.	Maxim.	Minim.
32mt, aux winch	5,0m	31,0m	39,6m	9,6m
36mt	3,5m	29,2m	36,4m	8,8m
90mt	5,1m	18,5m	26,7m	9,5m
150mt	3,5m	12,0m	20,5m	8,6m
200mt	3,5m	9,0m	20,5m	16,5m

type
CEC CONFIDENCE



Location	TEU	FEUs + TEUs
•Deck and hatch	430	210 + 10
Cargo hold	220	106 + 8
Total	650	316 + 18

Container load	14mt	16mt	18mt	20mt	22mt
Homogeneous					
Intake TEUs	409	393	378	357	342

