





### Seaworthy and efficient hull lines

- Optimised hull lines
- Minimum power required and fuel consumption
- Efficient rudder and skeg design
- Very good manoeuvrability and excellent course stability



### Crew comfort

- Spacious and well designed accommodation for maximum crew comfort
- Accommodation for 25 persons



### Efficient cargo handling

- 4 sets of level luffing cargo cranes prepared for grab operation
- Cargo crane SWL of 30 tonnes
- End-folding, double skin, hydraulically operated cargo hold hatch covers



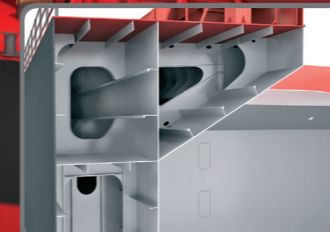
### Easy and fast cargo discharge and hold cleaning

- Double side and double skin bulk heads provide complete flush holds to ensure easy and fast discharge and cleaning
- Wide hatches for easy cargo spotting
- Permanent cargo hold lighting



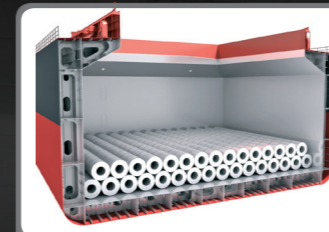
### Environmentally friendly

- Low emission machinery
- Heavy fuel oil stored in deep tanks in engine room with cofferdams towards ship side to minimise risk of oil spill
- Cargo hold washing water holding tanks



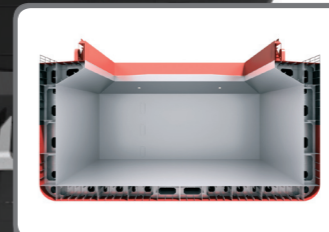
### Maintenance friendly

- Permanent access for survey of steel structure
- Ballast piping and valves arranged in double bottom pipe duct for easy access and minimum maintenance
- Service piping arranged in wing tank pipe duct to minimise maintenance and risk of cargo damage
- 2 coat epoxy paint system in ballast tanks



### Wide range of cargo

- All typical bulk cargoes
- Engine room bulkhead A60 insulated
- Superior steel coil loading (2 tier of 20 tonnes per coil in all cargo holds)
- CO<sub>2</sub> fire protection of cargo holds



### Safety

- Double hull provide a secondary barrier against accidental water ingress
- Forecastle provides green water protection and reserve buoyancy
- Protected underdeck passage to forecastle
- Hullgirder and transverse bulkheads strengthened to withstand cargo hold flooding

## Main features

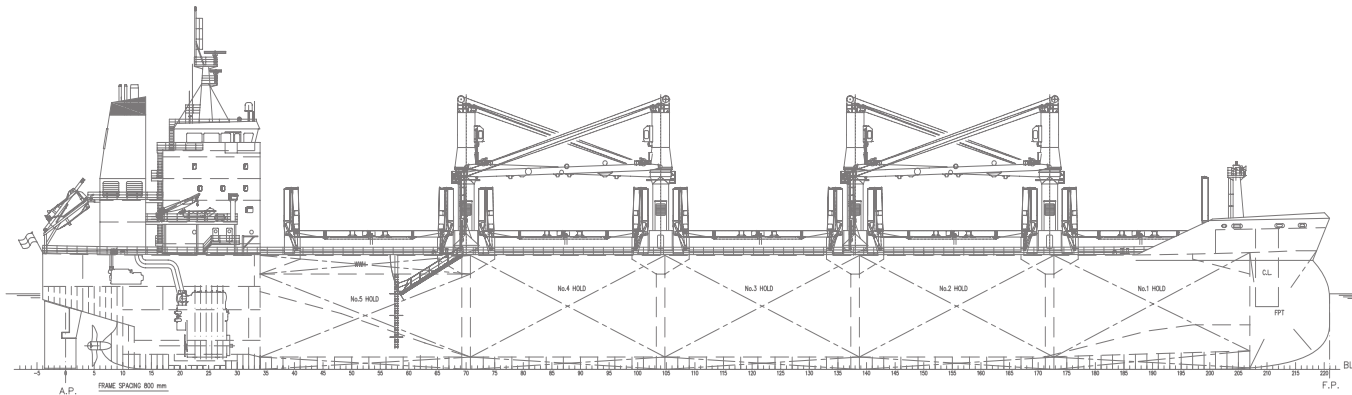
DIAMOND 34 is a new generation, geared, wide hatched, 34,000 DWT Handymax Bulk Carrier with double hull.

Designed to accommodate the latest trends and developments within the Handymax bulk carrier trade, extensive focus has been dedicated to:

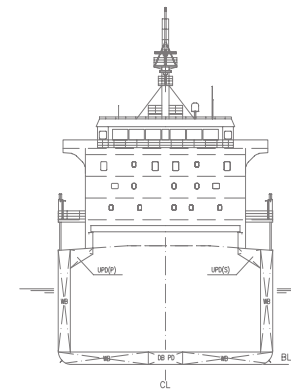
- economical operation / maintenance
- environmental friendliness
- loading flexibility and robustness
- future regulations for Bulk Carriers
- safety

Diamond 34 has been designed by Carl Bro following extensive consultations with DNV for structural and regulatory issues and Graig from an operational view to secure a balance between theoretical and commercially practical aspects.

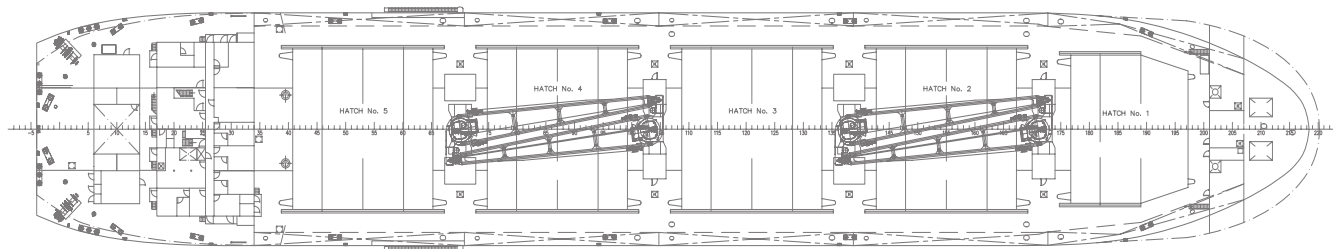
# General arrangement



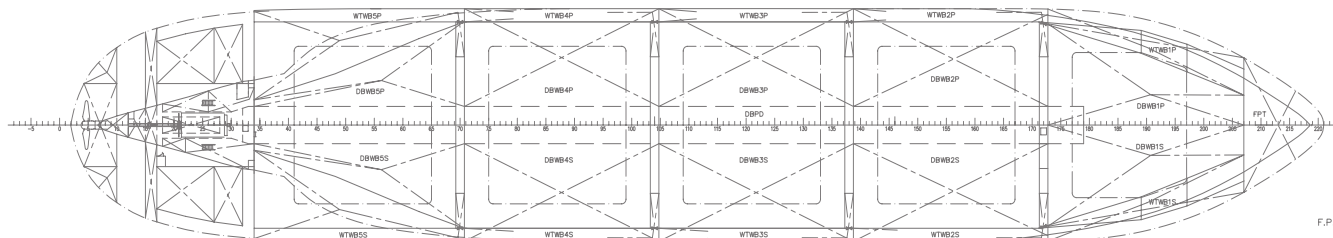
**PROFILE**



**MIDSHIP SECTION**



**UPPER DECK**



**TANK TOP**

## 34K HANDYSIZE BULK CARRIER

### MAIN DIMENSIONS:

LENGTH OVER ALL MAX.	180.00 m
LENGTH BETWEEN P.P.	176.75 m
BREADTH MOULDED	30.00 m
DEPTH MLD. TO UPPER DECK	14.70 m
DESIGN DRAFT MLD.	9.00 m
SCANTLING DRAFT MLD.	9.75 m
DEADWEIGHT (DESIGN DRAFT)	30.300 t
DEADWEIGHT (SCANTLING DRAFT)	34.000 t
CARGO CAPACITY	45.500 m <sup>3</sup>

### CLASS NOTATION:

DNV +1A1 BULK CARRIER ES(D), NAUTICUS (New building), BC-A (Hold 2,4 EMPTY), ESP, EO, HA(+), DK(+), IB(+), TMON, BIS, FUEL (600 cSt)

### SPEED AND CONSUMPTION:

Service speed (Scantling draft)	14.0 knots
HFO consumption (LCV 40.200 kJ/kg)	
Total consumption at sea	28.8 t/day

The material contained in this brochure is made available in good faith. No warranty is given as to the accuracy or completeness of the information contained in it and any liability for any inaccuracy or incompleteness is therefore expressly disclaimed. The contents of this brochure are not intended to be legally binding and will not form part of any subsequent contract.